



NCC Blade

Network Communication Controller



In order to suit the permanent need of POS networking around the world, Ingenico has designed the **Network Communication Controller (NCC)**.

NCC can be used as

LAN Controller

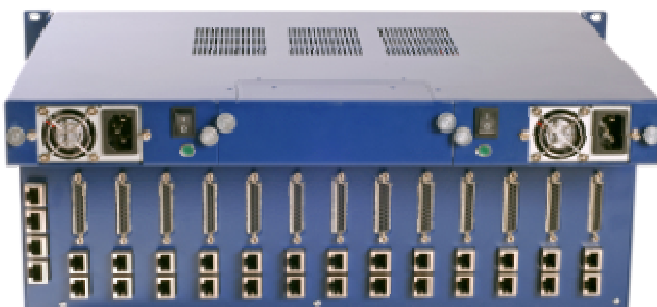
Transaction router

Dial-up POS concentrator

NCC modular design offers enough flexibility to respond efficiently to customer needs. It is fully programmable and easily customisable for networking and banking requirements.

SPECIFICATIONS

435x312x174 mm (4U Standard).
Single or Dual power supply (in option).
13 Slots EUROCARD for CPU004 cards.
1 Slot for the Management Blade.
1 RS232 and 2 RJ45s connectors by slot.
Fast Ethernet Backplane.
Power Supply: 100-240v 5-3A
Max Output: 120W on +5v/+3v.
CE Approval (EN55022 – EN55024 – Security IEC60950)
Operating temperature : 0°C to +50°C
Storage temperature : -20°C to +80°C
Humidity : 5% to 95 % non condensing.



NCC is manufactured by Ingenico's telecommunication business Unit. This unit designs and manufactures complete end-to-end data communication solutions for industrial markets. Ingenico's telecom business unit offers a wide range of products, which includes communication gateways and communication adapter boards. Our family of embedded solutions allows OEMs to rapidly integrate a variety of communication functions as IP connectivity into any product platform. Ingenico invests in leading-edge technologies and leverages its experience in point of sale communications to offer easy to implement, cost effective and reliable telecommunication solutions.

At the same time this addresses the connectivity and security requirements for dial up and wireless remote access.

